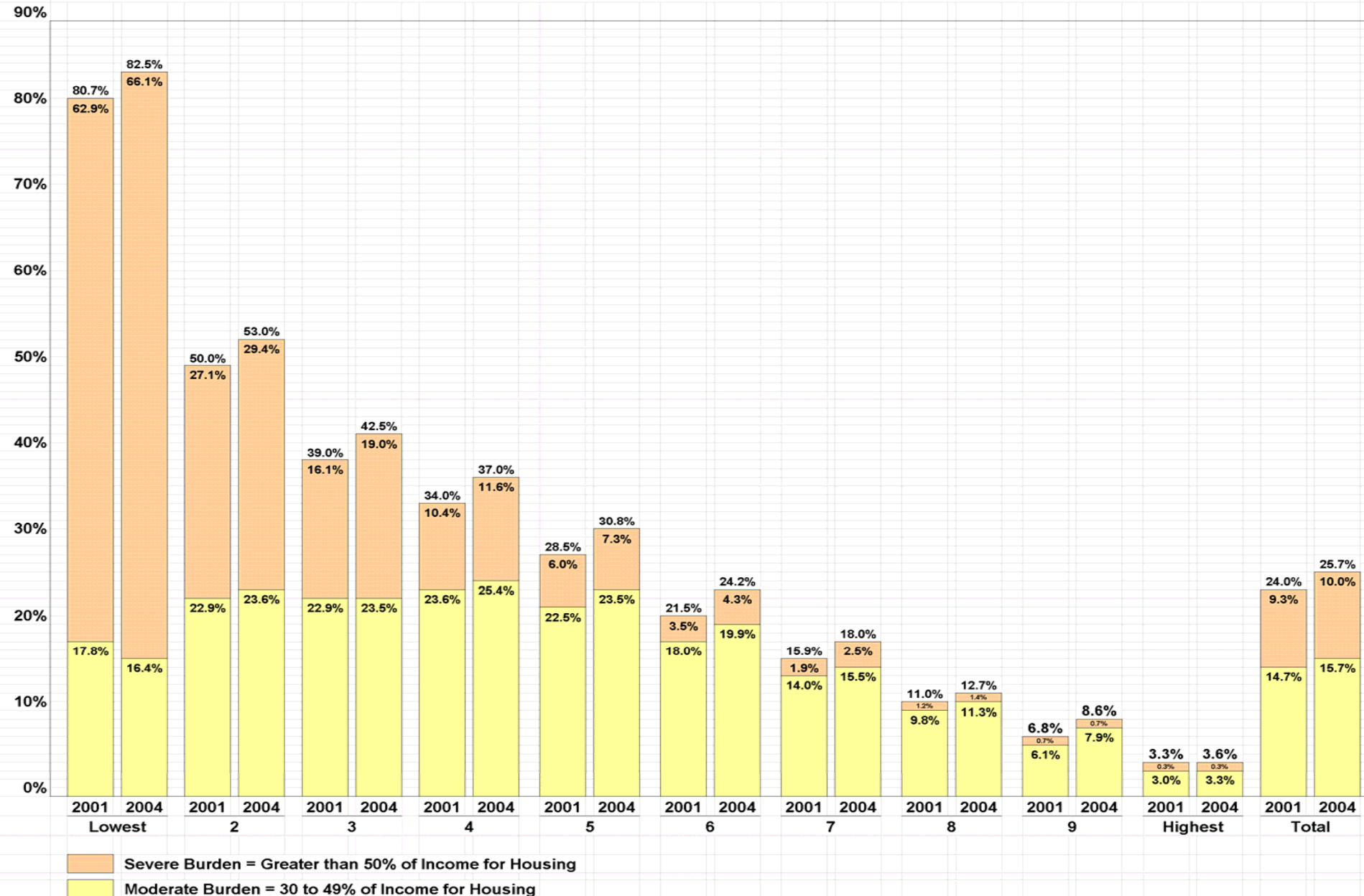


Housing Cost-Burdened Households by Tenure and Income 2001 and 2004

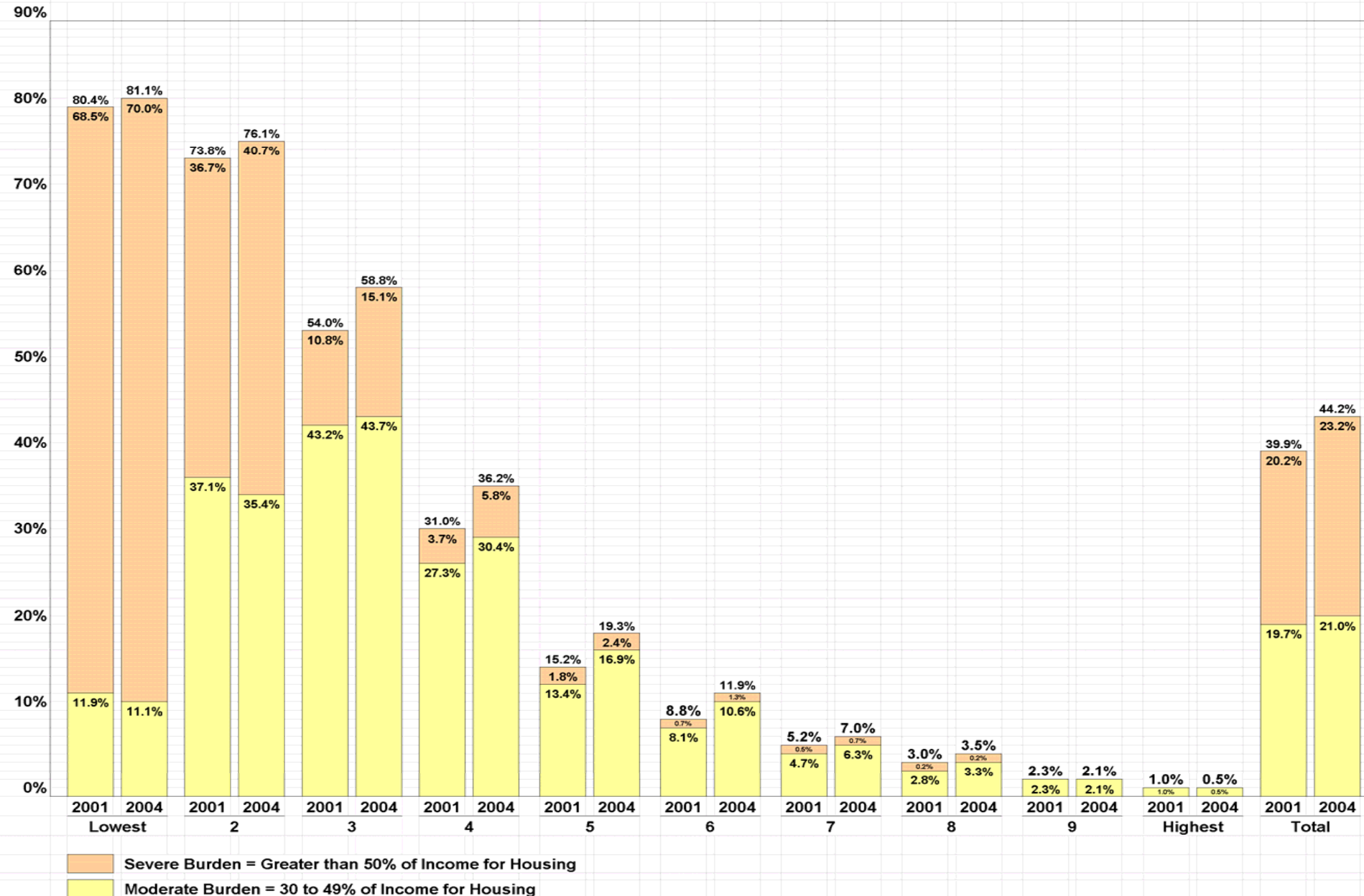
Tenure and Income	2001				2004			
	No Burden	Moderate Burden	Severe Burden	Total	No Burden	Moderate Burden	Severe Burden	Total
Owners								
Bottom Decile	771,466	709,324	2,505,611	3,986,401	683,916	644,343	2,592,662	3,920,921
2	2,609,351	1,196,547	1,415,875	5,221,773	2,525,508	1,268,025	1,580,574	5,374,107
3	3,484,717	1,304,863	916,690	5,706,270	3,425,807	1,397,379	1,131,862	5,955,048
4	4,072,882	1,455,610	643,743	6,172,235	4,127,739	1,668,343	762,125	6,558,207
5	4,821,399	1,512,671	401,963	6,736,033	4,930,528	1,676,024	521,959	7,128,511
6	5,736,838	1,312,060	256,914	7,305,812	5,876,685	1,546,731	334,739	7,758,155
7	6,642,570	1,104,905	153,193	7,900,668	6,884,547	1,301,144	211,033	8,396,724
8	7,531,326	830,650	99,785	8,461,761	7,855,483	1,017,790	127,706	9,000,979
9	8,415,961	554,686	59,476	9,030,123	8,793,780	756,719	72,012	9,622,511
Top Decile	9,144,967	288,395	31,954	9,465,316	9,673,389	334,635	29,436	10,037,460
Total	53,231,477	10,269,711	6,485,204	69,986,392	54,777,382	11,611,133	7,364,108	73,752,623
Renters								
Bottom Decile	1,308,895	788,882	4,559,136	6,656,913	1,337,030	781,923	4,950,346	7,069,299
2	1,421,791	2,009,051	1,991,048	5,421,890	1,345,682	1,987,446	2,283,248	5,616,376
3	2,272,980	2,131,430	532,953	4,937,363	2,074,671	2,202,042	758,725	5,035,438
4	3,086,983	1,218,310	166,001	4,471,294	2,830,117	1,346,320	255,736	4,432,173
5	3,312,233	524,544	70,831	3,907,608	3,117,153	654,146	90,595	3,861,894
6	3,045,689	269,965	22,012	3,337,666	2,850,010	341,863	40,519	3,232,392
7	2,600,193	128,631	14,180	2,743,004	2,412,675	164,318	16,895	2,593,888
8	2,116,055	60,994	4,804	2,181,853	1,919,413	65,263	4,348	1,989,024
9	1,577,125	36,336	-	1,613,461	1,339,760	28,588	-	1,368,348
Top Decile	1,166,206	12,222	-	1,178,428	948,271	4,911	-	953,182
Total	21,908,150	7,180,365	7,360,965	36,449,480	20,174,782	7,576,820	8,400,412	36,152,014
All Households								
Bottom Decile	2,080,361	1,498,206	7,064,747	10,643,314	2,020,946	1,426,266	7,543,008	10,990,220
2	4,031,142	3,205,598	3,406,923	10,643,663	3,871,190	3,255,471	3,863,822	10,990,483
3	5,757,697	3,436,293	1,449,643	10,643,633	5,500,478	3,599,421	1,890,587	10,990,486
4	7,159,865	2,673,920	809,744	10,643,529	6,957,856	3,014,663	1,017,861	10,990,380
5	8,133,632	2,037,215	472,794	10,643,641	8,047,681	2,330,170	612,554	10,990,405
6	8,782,527	1,582,025	278,926	10,643,478	8,726,695	1,888,594	375,258	10,990,547
7	9,242,763	1,233,536	167,373	10,643,672	9,297,222	1,465,462	227,928	10,990,612
8	9,647,381	891,644	104,589	10,643,614	9,774,896	1,083,053	132,054	10,990,003
9	9,993,086	591,022	59,476	10,643,584	10,133,540	785,307	72,012	10,990,859
Top Decile	10,311,173	300,617	31,954	10,643,744	10,621,660	339,546	29,436	10,990,642
Total	75,139,627	17,450,076	13,846,169	106,435,872	74,952,164	19,187,953	15,764,520	109,904,637

Moderate Burden = 30 to 49% of Income for Housing
 Severe Burden = Greater than 50% of Income for Housing
 Source: Joint Center for Housing Studies

Housing Cost Burdens By Household Deciles 2001 and 2004 Owners



Housing Cost Burdens By Household Deciles 2001 and 2004 Renters



Severe Burden = Greater than 50% of Income for Housing
 Moderate Burden = 30 to 49% of Income for Housing

Housing Cost Burdens By Household Deciles 2001 and 2004 Total

